

Access Control



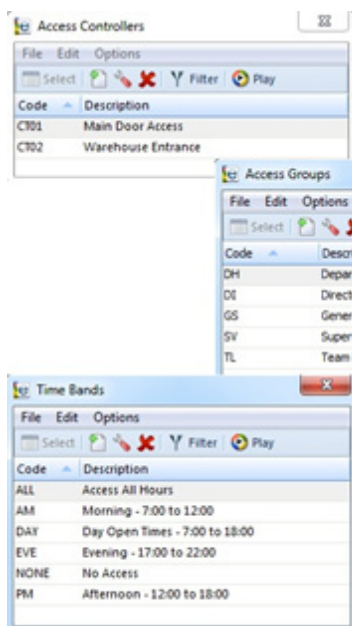
The Access Control module may be used to control and monitor employee movements through any doors at an organisation's premises

Equator's Access Control can be used to cover not only the external entry points, but also any internal doors to areas where access is to be restricted. Employee identification is made by using proximity, magnetic, barcode or biometric fingerprint technology.

Facts

The Benefits of the Access Control

- Security - Preventing unauthorised access to premises
- Access Control can utilise the same time clocks that are used by Time & Attendance and/or Shop Floor Data Collection, simultaneously
- Real time information and validations
- Where there is a need for many or extensive access control points, a variety of low-cost, durable internal/external devices are available; their modern design complements all environments. These access devices can also be used to control parking zones and their barriers
- In the case of a fire or other emergency the doors are automatically opened. Plus, the system will produce, automatically, a roll call of personnel within the building when the alarm sounds



19-09-2013 16:44:12 SYSPRO DEMONSTRATION Page 1 of 1
Access control report

Date range for reporting 2/02/2009 to 19/09/2013

Day	In/Out	Transaction date	Transaction time	Elapsed time	Terminal ID
Department : Administrat					
Employee: 000002 Claire Cjerlston					
Fri	In	04/05/12	15:30		T01 Terminal 1 - Product
Fri	Out	04/05/12	17:30	2:00	ASSUMED
Fri	In	01/06/12	11:47		T01 Terminal 1 - Product
Fri	Out	01/06/12	11:56	0:09	ADM01 ADM01
Mon	In	02/07/12	14:38		T01 Terminal 1 - Product
Fri	Out	25/01/13	16:45		T03
Department : Production					
Employee: 000001 James Peter Carter					
Tue	In	05/10/10	10:04		ADM01 ADM01
Wed	Out	06/10/10	12:27	26:23	ADM01 ADM01
Wed	In	06/10/10	12:52	0:25	ADM01 ADM01
Wed	Out	06/10/10	12:53	0:01	ADM01 ADM01
Wed	In	06/10/10	13:53	1:00	ASSUMED
Wed	Out	06/10/10	17:30	3:37	ASSUMED
Fri	In	08/10/10	10:37		T01 Terminal 1 - Product
Fri	Out	08/10/10	10:59	0:22	T01 Terminal 1 - Product
Fri	In	08/10/10	11:01	0:02	ADM01 ADM01
Fri	Out	16/03/12	16:51		T01 Terminal 1 - Product
Fri	In	04/05/12	13:00		ASSUMED
Fri	Out	04/05/12	14:00	1:00	ASSUMED

Access Control



Facts

Equator Access Control Features

- Links to other security components such as alarms and fire doors
- User defined access times
- Group and individual access rights
- User defined access dates
- User defined access points
- Calendar facility
- Personnel and hierarchy grouping
- Temporary and contract personnel
- Automatic muster points
- Time & Attendance reconciliation
- Real time information and validations
- User defined messages and prompts
- Auto create Time & Attendance in/out swipes
- Independent access time clock functionality
- User defined data entry including PIN
- Online visual entry
- Graphic in/out picture
- User Interface:
 - Wizards
 - Online help
 - Favourites
- Security:
 - User access controls and encryption
 - Online help
 - Favourites